

RACING
STRIPES

A Handbook Lookbook

RACING
STRIPES
RACING
STRIPESF23
H O U 2 9SOME MODELS, TRIMS, AND FEATURES MAY VARY
AVAILABLE OR MAY BE SUBJECT TO CHANGE.VINTAGE
M U S T A N G
BABY
BLUELINE UP
ITEM

General
Denim
Baby Tee
Hat
Keychain

For Everyone Who Drives

FEATURING A NEW LINE OF WORKWEAR
INSPIRED BY SYDNEY'S VINTAGE MUSTANG



SYDNEY
SWEENEY
@SYDNEY_SWEENEY

How to Change a 12V Battery

ITEM *Coveralls*

DEMONSTRATED ON A 2024 MUSTANG® GT FT. THE FORD X SYDNEY SWEENEY X DICKIES COVERALLS
ALWAYS CONSULT THE OWNER'S MANUAL BEFORE PERFORMING VEHICLE MAINTENANCE.

WARNING

Batteries normally produce explosive gases which can cause personal injury. Therefore, do not allow flames, sparks, or lighted substances to come near the battery. When working near the battery, always shield your face and protect your eyes. Always provide correct ventilation.

WARNING

When lifting a plastic-cased battery, excessive pressure on the end walls could cause acid to flow through the vent caps, resulting in personal injury and damage to the vehicle or battery. Lift the battery with a battery carrier or with your hands on the opposite corners.

WARNING

Keep batteries out of reach of children. Batteries contain sulfuric acid. Avoid contact with skin, eyes, or clothing. Shield your eyes when working near the battery to protect against possible splashing of acid solution. In case of acid contact with skin or eyes, flush immediately with water for a minimum of 15 minutes and get prompt medical attention. If acid is swallowed, call a physician immediately.

WARNING

Always consult the Owner's Manual before performing vehicle maintenance.

WARNING

Battery posts, terminals, and related accessories contain lead and lead compounds, chemicals known to the State of California to cause cancer and reproductive harm. WASH YOUR HANDS AFTER HANDLING.

WARNING

Vehicles with Auto-Start-Stop: the battery requirement is different. You must replace the battery with one of exactly the same specification.

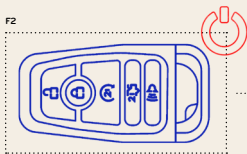
WARNING

This vehicle may have more than one battery. Removing the battery cables from only one battery does not disconnect your vehicle electrical system. Make sure you disconnect the battery cables from all batteries when disconnecting power. Failure to do so may cause serious personal injury or property damage.

STEP 1

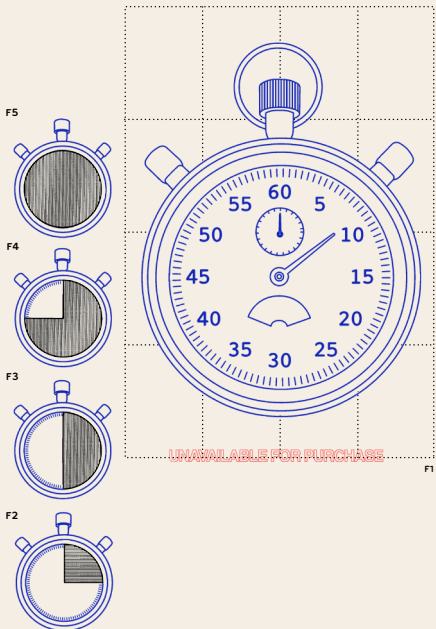
Before changing your battery, make sure to apply the parking brake and switch the ignition off, including all electrical equipment.

F2



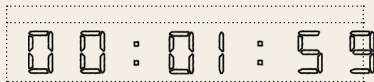
F1
TWO-PIECE KEYCHAIN
WITH DETACHABLE
CENTER CLIP FOR
ADDED VERSATILITY





F6

SEE YOUR OWNER'S MANUAL FOR DETAILED INFORMATION.
DISCONNECTING THE BATTERY WITHOUT WAITING CAN CAUSE
DAMAGE NOT COVERED BY THE VEHICLE WARRANTY.



STEP 2

**Wait two full
minutes before
changing
the battery.**



F1



F2



F3



F4 SIGNATURE
PATCH

STEP 3

Open the hood
and locate
the battery.

12



F5
ON THE 2024
FORD MUSTANG®
GT, THE BATTERY
IS UNDER
THE HOOD IN
THE UPPER-
LEFT CORNER.

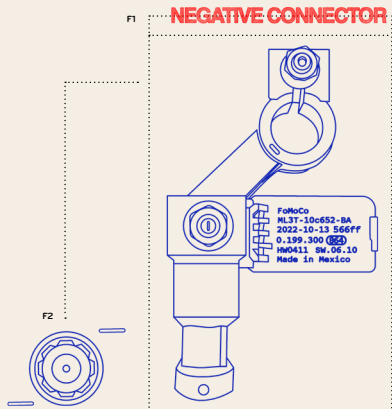
13

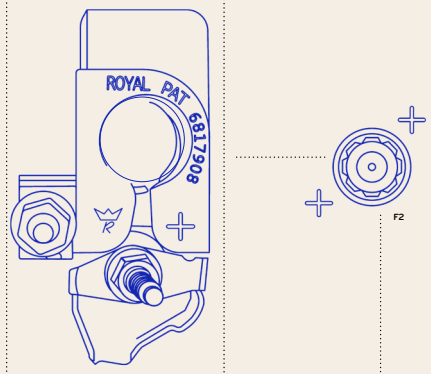
**ALWAYS DISCONNECT
(-) TERMINAL FIRST**



STEP 4

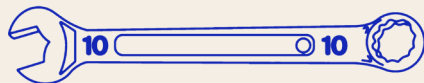
**Disconnect
and isolate the
negative battery
cable terminal.**



POSITIVE CONNECTOR

F1

F3



16

STEP 5

**Disconnect
and isolate the
positive battery
cable terminal.**



17

STEP 6

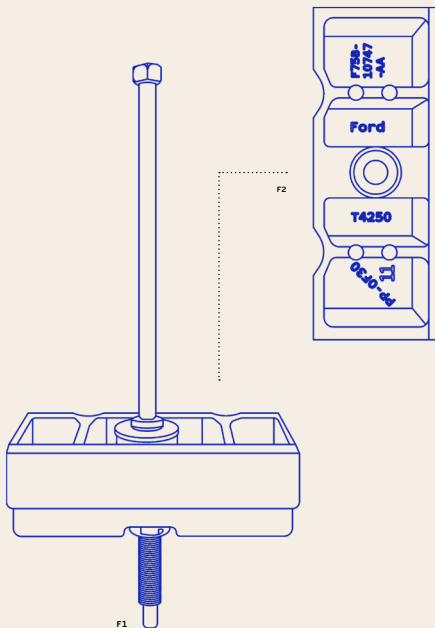
Remove the battery securing clamp.



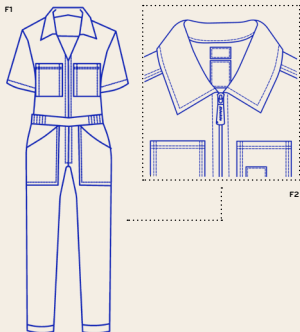
F4



18



19



STEP 7

Remove the battery. To install the replacement, follow these steps in reverse!

20

SEE YOUR OWNER'S MANUAL FOR DETAILED INFORMATION. YOU MUST REPLACE THE BATTERY WITH ONE OF EXACTLY THE SAME SPECIFICATION. BEFORE RECONNECTING THE BATTERY, MAKE SURE THE IGNITION REMAINS SWITCHED OFF.

F3
DARK-WASH
DENIM 6-POCKET
COVERALL
CINCHED WAIST
FOR SECURE FIT



21



How to Check and Fill Your Tires

ISABELLE
ROSA
@GIRLMEETSMUSTANG

DEMONSTRATED ON A 2024 MUSTANG® GT. FT. THE FORD X SYDNEY SWEENEY X DICKIES JACKET.
ALWAYS CONSULT THE OWNER'S MANUAL BEFORE PERFORMING VEHICLE MAINTENANCE.

WARNING!

Do not use the tire pressure displayed in the information display as a tire pressure gauge. Failure to follow this instruction could result in personal injury or death. Always consult the Owner's Manual before performing vehicle maintenance.



WARNING



Under-inflation is the most common cause of tire failures and may result in severe tire cracking, tread separation or blowout, with unexpected loss of vehicle control and increased risk of injury. Under-inflation increases sidewall flexing and rolling resistance, resulting in heat buildup and internal damage to the tire. It also may result in unnecessary tire stress, irregular wear, loss of vehicle control and accidents. A tire can lose up to half of its air pressure and not appear to be flat. Always consult the Owner's Manual before performing vehicle maintenance.

STEP 1

Find the tire pressure sticker in your car to identify your tire's recommended pressure.

This is usually inside the driver's-side door.



F1

P.S. YOU MAY SEE
A LOW TIRE
PRESSURE SYMBOL
ON YOUR DASHBOARD.



TIRE AND LOADING INFORMATION

SEATING CAPACITY TOTAL: 4 FRONT: 2 REAR: 2

THE COMBINED WEIGHT OF OCCUPANTS AND CARGO SHOULD NEVER EXCEED: 338 KG / 747 LBS

| TIRE | SIZE | COLD TIRE PRESSURE | SEE OWNER'S MANUAL FOR ADDITIONAL INFORMATION |
|-------|---------------|--------------------|---|
| FRONT | 255/40R19 90W | 220 kPa, 32 PSI | |
| REAR | 275/40R17 90W | 220 kPa, 32 PSI | |
| SPARE | NONE | NONE | |



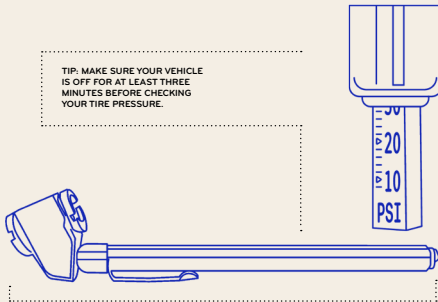
F2



STEP 2

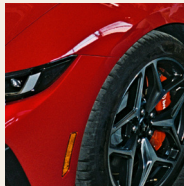
Use a tire pressure gauge to check your tire's current pressure via the tire's valve.

TIP: MAKE SURE YOUR VEHICLE IS OFF FOR AT LEAST THREE MINUTES BEFORE CHECKING YOUR TIRE PRESSURE.

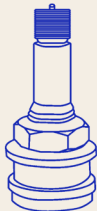


F2
TIRE PRESSURE GAUGE

F3



F1
TIRE
VALVE



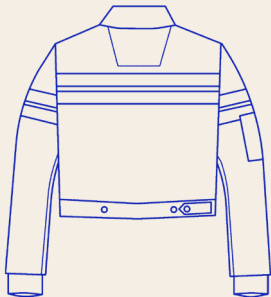
F4



F1



F2



STEP 3

If below the recommended pressure, fill it up!



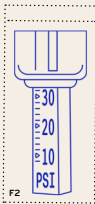
ROLLABLE JACKET SLEEVES
FOR MANEUVERABILITY



34

32

F1



STEP 4

Re-insert the tire pressure gauge to make sure it matches the recommended spec from the sticker.
You're good to go.

SEE YOUR OWNER'S MANUAL FOR DETAILED INFORMATION. FAILURE TO FOLLOW THE TIRE PRESSURE RECOMMENDATIONS CAN CAUSE UNEVEN TREADWEAR PATTERNS AND ADVERSELY AFFECT THE WAY YOUR VEHICLE HANDLES.

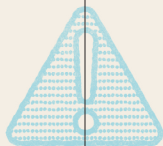
35

How to Change Your Engine Air Filter



ITEM *By The Tee*

DEMONSTRATED ON A 2024 MUSTANG® GT FT. THE FORD X SYDNEY SWEENEY X DICKIES CROPPED TEE.
ALWAYS CONSULT THE OWNER'S MANUAL BEFORE PERFORMING VEHICLE MAINTENANCE.



WARNING!

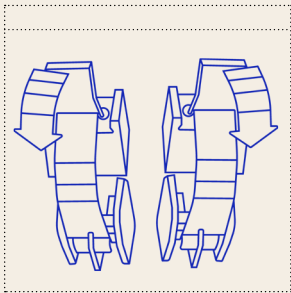
To reduce the risk of vehicle damage and personal burn injuries, do not start your engine with the air cleaner removed and do not remove it while the engine is running. Always consult the Owner's Manual before performing vehicle maintenance.

STEP 1

Identify the air filter housing and release the clips securing the cover.



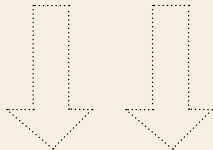
F1

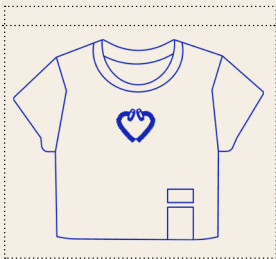


F2



F3





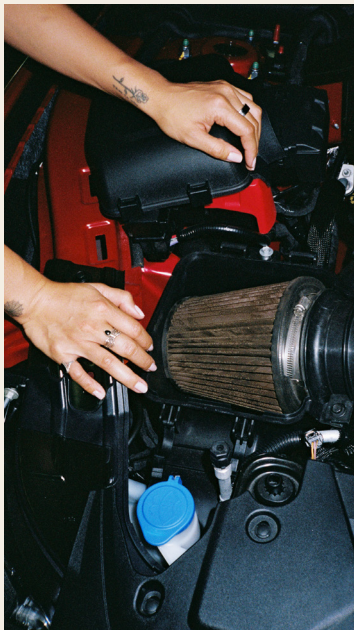
F1
CROPPED
TEE WITH
HEART LOGO

STEP 2

**Set aside
the air filter
housing cover
to reveal
the air filter.**

COLOR *White*

CUT *Cropped*

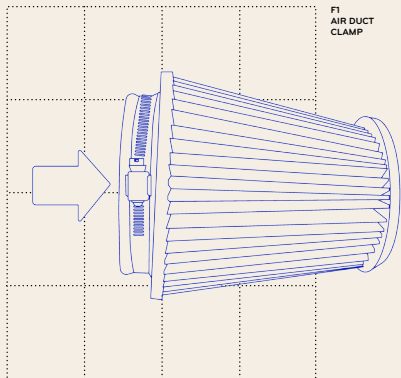


BABY TEE
RIBBED MATERIAL
CROPPED FIT
WHITE
EMBROIDERED PATCH
IMPORTED
MULTIPLE
SIZES



STEP 3

Loosen the
clamp that
secures the
air filter to
the air duct.





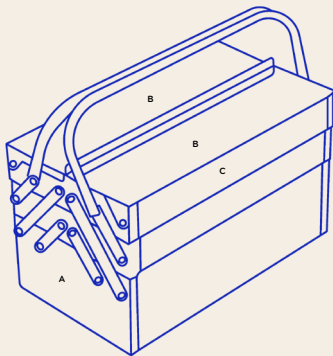
SIDE C



SIDE B



SIDE A

UNAVAILABLE
FOR PURCHASE

STEP 4

Remove the air filter element from the air filter housing.

46



47

STEP 5

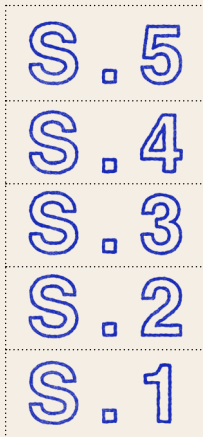
To install, follow the steps in reverse.



48

SEE YOUR OWNER'S MANUAL FOR DETAILED INFORMATION. ENSURE THAT THE TAB ON THE BOTTOM OF THE FILTER IS PROPERLY SEATED TO THE NOTCH IN THE HOUSING.

F1



F2 P.S. IF YOUR VEHICLE HAS A SECOND AIR FILTER LIKE THE MUSTANG, REPEAT THIS EXACT PROCEDURE.



49

How to Check Your Brake Fluid



@GELSTANG

GELICA
PERALTA

DEMONSTRATED ON A 2024 MUSTANG® GT FT. THE FORD X SYDNEY SWEENEY X DICKIES CORDUROY HAT.
ALWAYS CONSULT THE OWNER'S MANUAL BEFORE PERFORMING VEHICLE MAINTENANCE.



WARNING

The brake system could be affected if the brake fluid level is below the MIN mark or above the MAX mark on the brake reservoir.

Only use brake fluid from a sealed container. Contamination with dirt, water, petroleum products or other materials may result in brake system damage or failure. Failure to adhere to this warning could result in the loss of vehicle control, serious personal injury or death.



WARNING

Do not allow the fluid to touch your skin or eyes. If this happens, rinse the affected areas immediately with plenty of water and contact your physician.

Do not use any fluid other than the recommended brake fluid as this will reduce brake efficiency. Use of incorrect fluid could result in the loss of vehicle control, serious personal injury or death. Always consult the Owner's Manual before performing vehicle maintenance.



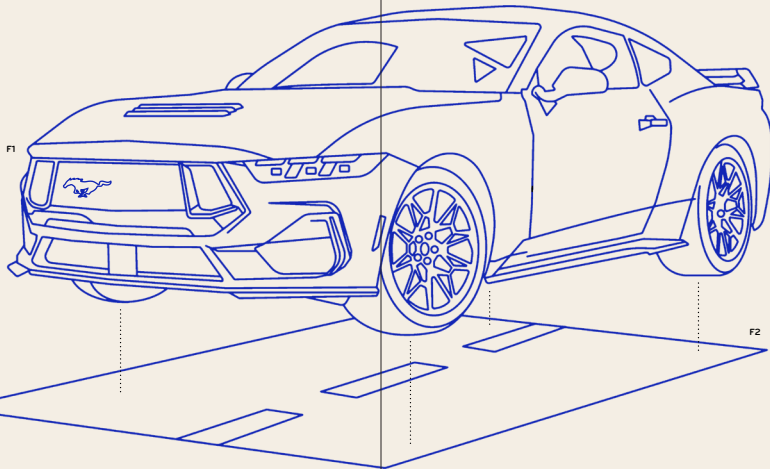
STEP 1

**Before you begin,
make sure your
car is parked on
a level surface.**

**PARKING
AREA**



F3



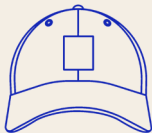
F1



F2



F3



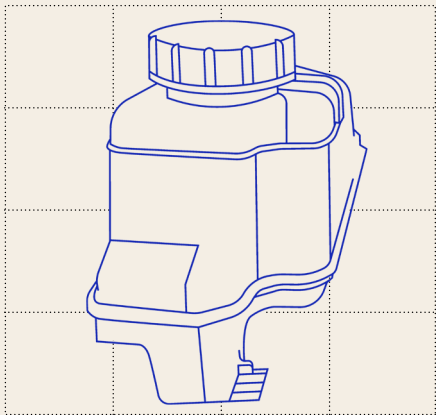
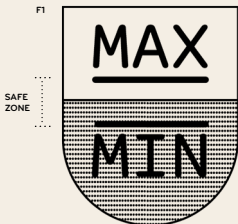
STEP 2

**Locate the
brake fluid
reservoir
under the hood.**



STEP 3

If your brake fluid is between the minimum and maximum levels set on the reservoir, you're good to go.





**SANDY
RANCATORE**
@BEAUTY_AND_THE_STAR

How to Check Your Oil

ITEM Work Jacket

DEMONSTRATED ON A 2024 MUSTANG® GT FT. THE FORD X SYDNEY SWEENEY X DICKIES JACKET.
ALWAYS CONSULT THE OWNER'S MANUAL BEFORE PERFORMING VEHICLE MAINTENANCE.



F1
ROLLABLE
SLEEVES
THAT ALLOW
FOR EASY
GLOVE USE



UNAVAILABLE FOR PURCHASE



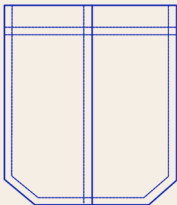
STEP 1

Make sure your vehicle is on level ground, then locate and remove the dipstick.

SEE YOUR OWNER'S MANUAL FOR DETAILED INFORMATION. CHECK THE OIL LEVEL BEFORE STARTING THE ENGINE, OR SWITCH THE ENGINE OFF AFTER WARM-UP AND WAIT 15 MINUTES FOR THE OIL TO DRAIN INTO THE OIL PAN. CHECKING THE OIL LEVEL TOO SOON COULD RESULT IN AN INACCURATE READING.

STEP 2

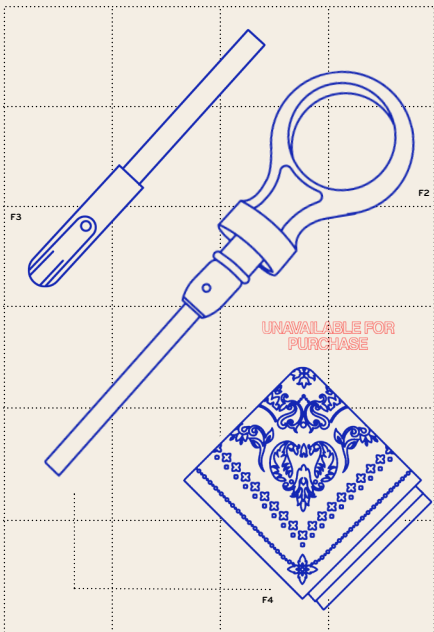
Wipe the dipstick clean, re-insert, and remove once more.



F1
EXTRA SLEEVE
POCKET TO
STORE WHAT
YOU NEED

DST 734





STEP 3

If the oil level is between the maximum and minimum marks, the oil level is acceptable. Do not add oil.

F1



SEE YOUR OWNER'S MANUAL FOR DETAILED INFORMATION. READ BOTH SIDES OF THE DIPSTICK AND USE THE LOWEST OIL LEVEL AS THE CORRECT READING. IF OIL LEVELS ARE CONTINUOUSLY NOTED ABOVE THE MAXIMUM MARK, HAVE YOUR VEHICLE CHECKED AS SOON AS POSSIBLE.

SOME MODELS
TRIMS AND
FEATURES
MAY NOT BE
AVAILABLE OR
MAY BE
SUBJECT TO
CHANGE



DROPS *Nov 29*